



## Univerbinder

## Universal Connector

**Beschreibung** Zinkdruckguss  
zur Verbindung von zwei Aluminiumprofilen

**Material** Univerbinder: Zinkdruckguss  
**Montageset:** Stahl

**Oberfläche** Univerbinder: blank  
**Montageset:** verzinkt

**Liefereinheit** 100 Stück

**Montageset** 1 Schraube DIN 912 - M8 x 30  
1 Nutenstein M8, Nut 10, mit Federblech

**Liefereinheit Set** 10 Stück

**Description** *Die-cast Zinc*  
To connect two aluminum profiles

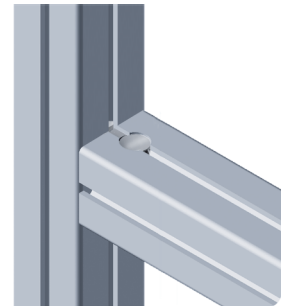
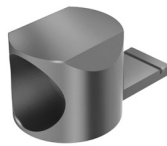
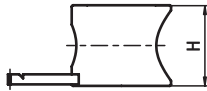
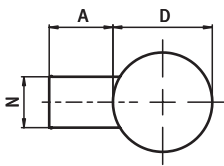
**Material** *Universal connector: Die-cast zinc*  
**Assembly set:** *Steel*

**Surface** *Universal connector: Plain*  
**Assembly set:** *Zinc plated*

**Pack Quantity** 100 pieces

**Assembly Set** 1 screw DIN 912 -M8 x 30  
1 T-slot nut, solt 10, with spring leaf

**Pack Quantity Set** 10 pieces



Ausführung Version	N	für Schraube for Screw	Profil Profile	A [mm]	D [mm]	H [mm]	Gewicht [g] Weight [g]		Teil- Nr. Part #
-	10	M8	45	12.7	19.7	16.0	14.0	<b>B</b>	<b>099A1045</b>
inkl. Montageset <i>With assembly set</i>			45	-	-	-		<b>B</b>	<b>099A1045S03</b>

